



**RELATING TO THE SPECIAL TERMS AND CONDITIONS N°CC03  
OF THE CONTRACT N°2010019 DATED 27/10/2020  
Cancels and replaces Special Terms and Conditions N°CC02**

**MILSPED TRANSPORT**

These Amendment serve to modify and clarify the following articles about mentioned contract and its special terms and conditions. In case of contradiction between the Special Terms and the General Rental Conditions, the terms noted in these Special Terms and Conditions prevail.

**1.1 EQUIPMENT (technical specification enclosed):**

2 x 30ft tipping chassis with hydraulic rotary feeder NON-ADR

*Registration numbers and next MOT inspection date:*

**EQ 953 JX – 10/2023**

**EQ 584 GV – 02/2024**

**2.2 PLACE WHERE THE EQUIPMENT IS MADE AVAILABLE**

Equipment is already rented since: 11/2020

**2.4 EQUIPMENT MAINTENANCE AND SERVICING**

The Lessee is responsible for all maintenance during the period of the rental contract as per article 2.4 of the General Rental Conditions.

**2.7 RETURN OF THE EQUIPMENT:**

Planned location of redelivery: **FRANCE**

**Rental Billing**

Billing will continue for 7 days after redelivery as per article 2.7.1 of the General Rental Conditions.

**2.7.2 Rates for Brake & Tyre wear**

As per Article 2.7.2 of the General Rental Conditions, wear will be calculated by comparing the state of the brakes and tyres at delivery to their state upon return to depot.

- Brake wear will be calculated per wheel, each percent of wear is payable by the Lessee: 5,00 € (excl. VAT) per brake.
- Tyre wear will be calculated per tyre, wear is payable by the Lessee: 34,54 € (excl. VAT) per mm

*Rates for 2023, subject to yearly price indexations*

**2.8 ADDITIONAL COSTS AND SUPPLEMENTARY SERVICES**

- a) Replacement of original documents (registration card, certificate of approval for vehicles carrying certain dangerous goods etc.) : 155 € (excl. VAT) per document
- b) Administration fees for supplementary services, per invoice: 32 € (excl. VAT)
- c) Administration fees for handling invoices for which Combipass acts as the intermediary (upon Lessee's request) 32 € (excl. VAT) per invoice handled
- d) Administration fees per invoice for treatment of fines: 17 € (excl. VAT)

*This list is non-exhaustive.*

*Rates for 2023, subject to yearly price indexations*

**4.5.2 COMPULSORY INSPECTION COSTS FOR THE LESSOR**

Costs incurred by the compulsory annual inspections, or MOT tests will be borne by the Lessor, for the maximum amount of 450 € (excl. VAT) per chassis per year, limited to the real cost of the inspection. Only charges for the inspection preparation, the brake testing and the inspection fees will be covered by the Lessor.

Costs for inspections will be borne only after presentation of a detailed estimate and validation of this estimate by the Lessor, if the Lessee's claim is received in writing during the month following the compulsory inspection. The inspection report and validated documents with a copy of the detailed invoice of the workshop will be sent to the Lessor.

**6.1 CIVIL LIABILITY**

The civil liability insurance of the equipment must be subscribed by the Lessee, who bears the costs. The Lessee agrees to provide the certificate of insurance, duly signed and stamped by his insurance company or his broker, to Combipass. All clauses of article 6.1 of the General Rental Conditions are applicable.

**6.2 DAMAGE INSURANCE**

The Lessee must insure the equipment for damages. Initial value per unit, to be insured by the lessee: 58000€ (excl. VAT)

**6.2.2 COMPENSATION VALUE**

In case of total loss of the leased equipment, the rental remains due until the Lessee pays the compensation value of the unit, as per Art. 6.2.2 of the General Rental Conditions.

**7.1 REMUNERATION OF THE LESSOR**

**RENTAL**

Monthly rate per unit: excl. VAT

*Rates for 2023, subject to yearly price indexations*

**ON AND OFF HIRE FEES: already paid**

The following costs are invoiced to the Lessee along with the first rental:

- Handling costs in & out per leased chassis: 75 € (excl. VAT)

No inspection costs are invoiced for chassis.

*Rates for 2023, subject to yearly price indexations*

**7.3 GUARANTEE DEPOSIT: already paid**

2040€

**7.5 PAYMENT**

Invoices are payable in Euro by automatic debit the 10<sup>th</sup> of the month of the invoice.  
Banking fees are borne by the Lessee.

**8.1 PERIOD OF OBLIGATION:**

This contract is valid for 12 months, started on 01/08/2023. At the end of the initial period, the contract is tacitly renewable according to the terms of Article 8.1 of the General Rental Conditions.

**NOTICE OF RESTITUTION:** 1 month before the end date.

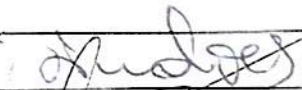
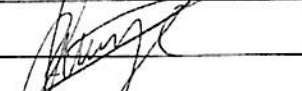
Enacted in Köln, on 24/08/2023

**FOR THE LESSOR**

Name of the signatory: Pierre MIGNOLET  
Capacity: Managing Director



Signature ID-Nr: DE318558308  
Handwritten: Geschäft Köln, HRB 94547

Signature SC	
Signature DIR	

**FOR THE LESSEE**

Name of the signatory: Dragan MILEKIC  
Capacity: General Director



Signature:  
Preceded by the handwritten comment  
"Read and agreed to"





**ROTARY FEEDER (if equipped)**

1	Rotary feeder Box	2	Rotor and engine
3	Air system seal	4	Manometer
5	Temperature gauge	6	RF accessories in tool box

**TEST**

1	Rotary feeder	2	Tipping cylinder
3	Tipping - Full extension	4	Sliding Cylinder

**EXTERNAL CONDITION**

	YES	NO	REMARKS
Rusted			
Scratched			

**TRAINING ON THE CHASSIS**

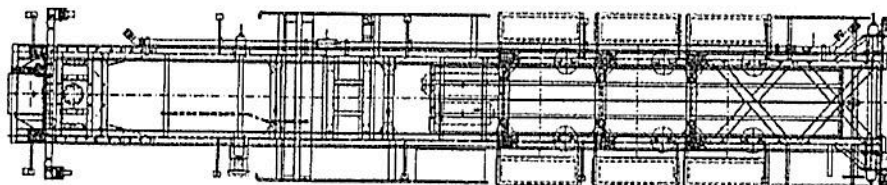
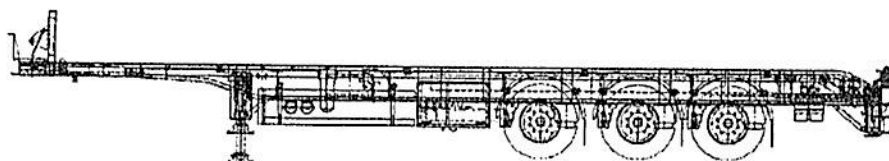
Date of training :

Place of training :

Present parts :

Name and signature

Combipass :	
Client :	
Workshop :	



**Customer :**

Date and Signature:

----------------------

**Depot :**

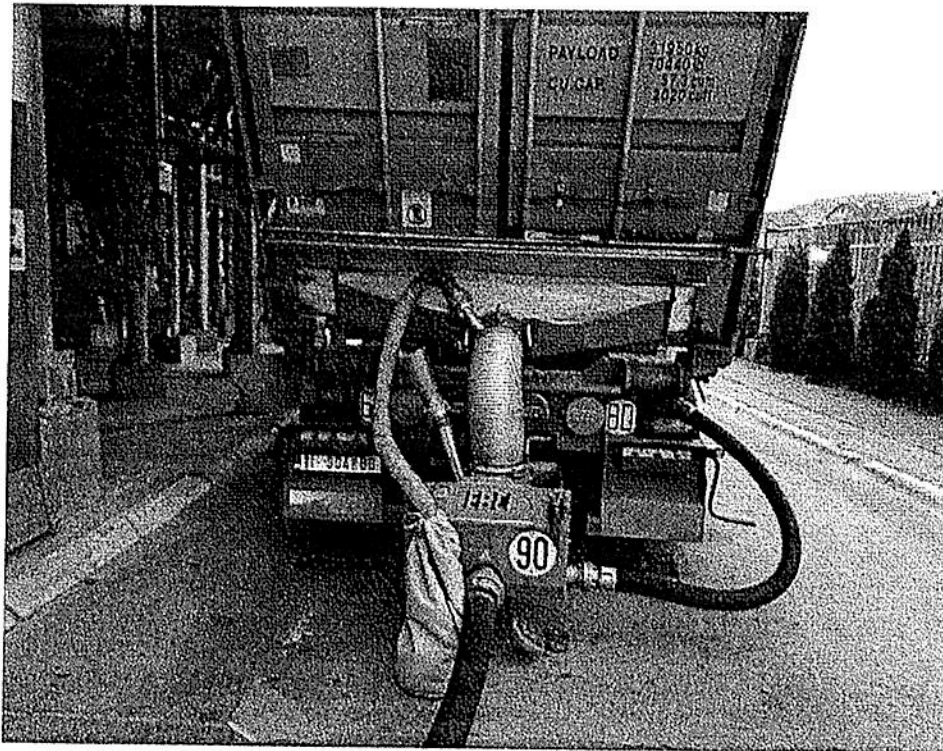
Date and Signature:

----------------------

By signing, we agree on the state of the chassis as mentioned on this document

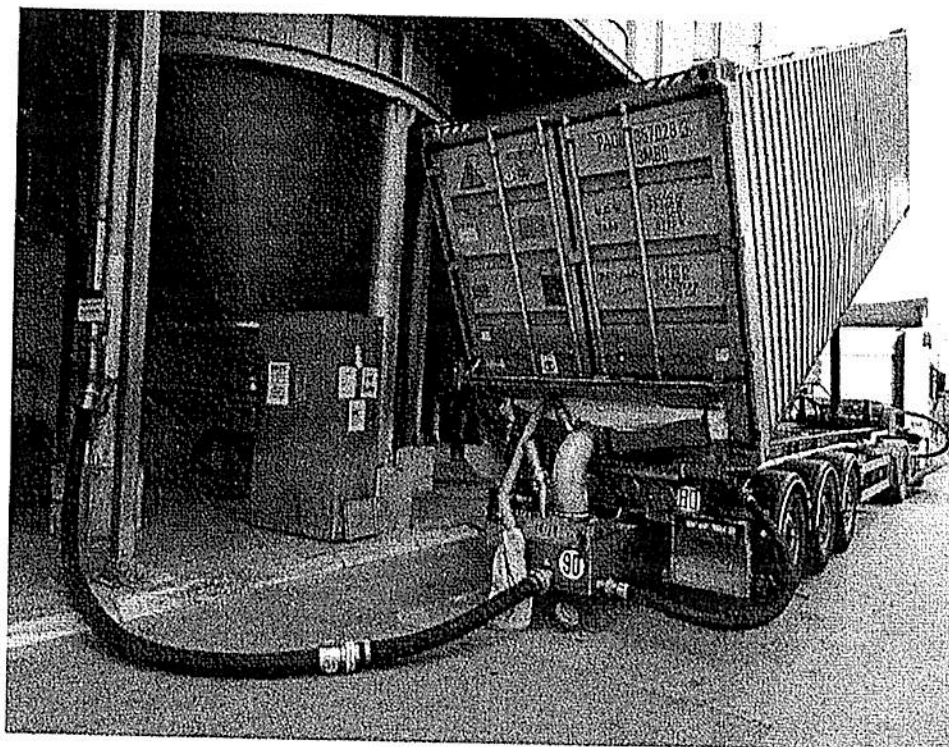
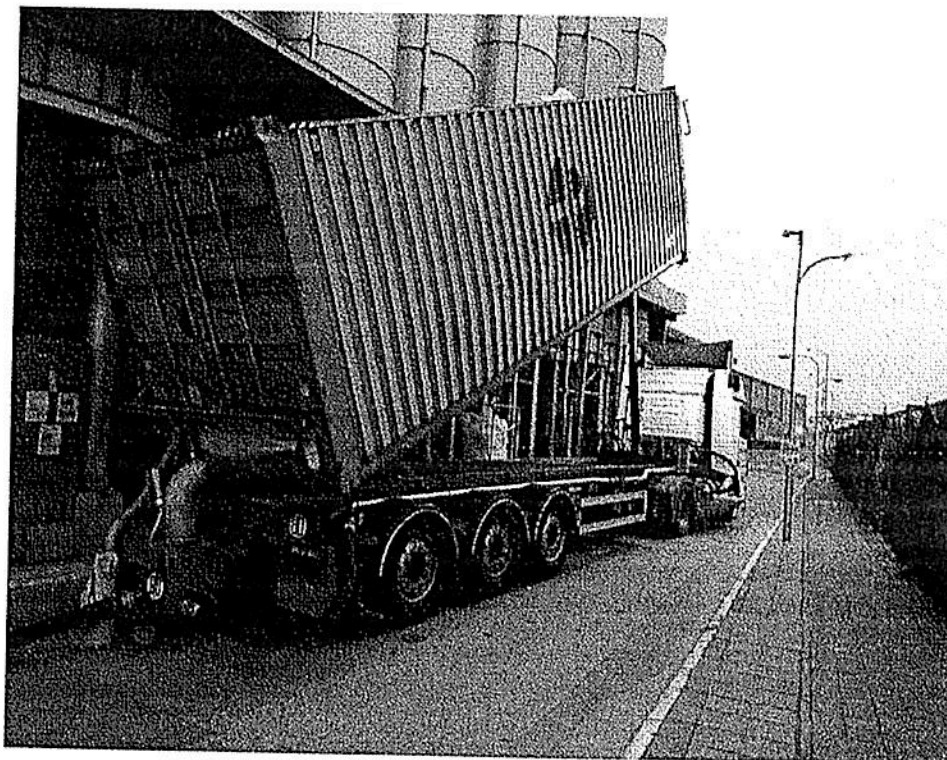
Legend	0 = damage following impact
√ = ok	1 = wear and tear
-- = not checked	2 = missing
× = Not applicable	3 = out of order
	4 = dirty

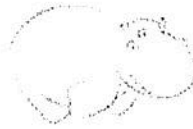
Fotografije sa istovara





Fotografije sa istovara





**30 FT TIPPING CHASSIS 24 V- with ROTARY FEEDER hydraulic  
ladder & walkway at the front**

**DIMENSIONS :**

overall length	approx 10,4 m
total width	max. 2.550mm
fifth wheel height (unladen)	1.150 mm (assumed value!)
chassis height	approx. 1.300 mm
centre kingpin to landing legs	2.390 mm

**WEIGHTS :** (max. technical / plated)

kingpin:	12.000 kg
axles:	27 000 kg
total:	39 000 kg
Empty weight :	5 740kg

**CHASSIS:**

- . straight steel chassis with 2 main I-beams at 1400 mm track and necessary cross members in between.
- . 4 twistlocks for transporting and tipping of a 30' ISO container.
- . Front twistlocks directly mounted onto sub frame of the tipping cylinder
- . Rear twistlocks placed at a turnable cross bearer flush at rear.
- . Rear twistlocks interconnected and equipped with steel chamfered edges for better guidance/positioning of container.
- . Chassis at rear extended and equipped with an ERIKSEN rotary feeder (non tipping type) and a supplementary steel underrun protection

**TIPPING CYLINDER :**

Front hydraulic tipping cylinder make Hyva serie FC 169 non-chrome plated cylinders. No tipping group, tipping angle between 45° and 50°, Hyfix clamp, with anti-burst valve directly on the cylinder.

Feed for tipping cylinder and rotary via pump group on truck via two 1" outside thread connections with blanking cap at left side front (without connecting hoses for truck).

**SUSPENSIONS & AXLES :**

Mercedes DCA weightmaster 3 x 9 T  
air suspension Mercedes  
raise and lowering valve Wabco TASC with automatic reset-to-ride position axle  
spread 1310 / 1410 mm  
no liftable axles disc brakes 430 mm

**RIMS & TYRES:**

6 off aluminium Alcoa silk gloss rims, offset 120 mm and tyres 385/65 R 22,5  
Dunlop SP 244



**COMBIPASS**  
RENTAL INTERMODAL EQUIPEMENT

**KINGPIN:**

2" SAE, make JOST, 1 position bolted in 8 mm Kingpin plate.

**LANDING LEGS :**

Front: mechanical type, 2-speed, 1-side mechanically operated, capacity 24 ton,  
make JOST MODUL B (steel) with compensating feet

Rear: mechanical, type (reinforced) MODUL CS with fixed plates 2-  
speed, 2 sides separately

**BRAKING SYSTEM :**

2-line air pressure according to EC regulations ECE R 13.9 and pneumatic parking brake on  
two axles

2 x ISO-couplings at the front;

anti-blocking system Wabco EBS +RSS 2S/2M with feed over 7-pole plug at front ISO 7638 +

emergency feed circuit via stoplights

disc brakes 430 mm

**ELECTRICAL SYSTEM :**

24 Volt according EC road regulations with 5-chamber Aspöck - Europoint II rear lights with  
license plate lightning included

one 15-pole connecting socket +2 7-pole sockets ISO 1185 +3731 at the front 2

front + rear marker lights Aspöck

side marker lights Aspöck (LED)

ADR-wiring

2 yellow / orange length marking plates at rear

**ACCESSORIES :**

**SPARE WHEEL CARRIER**

none

**MUDGUARDS**

black synthetic covers over each wheel

rubber anti-spray mud flaps behind wheels of second and last rudes

**TOOLBOX**

1 off in Alloy dimensions 2.460 x 700 x 490 mm with swing door with  
gastruds, mounted

left side between front landing legs and axles. Bottom plate protected with  
rubber.

Box with 4 compartments to house the tundish, couplings hoses and other  
accessories.

**SIDEGUARDS**

according EC regulations

Left side : big toolbox acting as side guard Right side : fixed aluminium  
side guard

**HOSE CARRIERS**

4 hose carriers near inside of beams out of black PE Diameter 200 mm,  
length 6 m, at rear covered by a lockable stainless steel tailgate

2 short hose carriers (black PE), diameter 160 mm, length 2500 mm, cross  
wise before the front landing legs

Black PE covers at right hand side.

at the right hand side a 3" stainless-steel airline with Storz couplings 3" at  
front+ rear complete with blanking stops and cable and 24 Volt aluminium  
air cooler.



**AIRLINE CARRIER**

Drum filter 5 micron and non-return valve behind the filter  
Blow down valve mounted between first and second tyre  
and pointing downwards.  
Line at the rear equipped with a pressure- and  
temperature gauge.

**ROTARY FEEDER**

make Eriksen, full stainless steel

**Pos. 1.:**

Rotary feeder type ER2G18-L in stainless steel 304. The rotary feeder is equipped with airseals for the unloading of granulates or powders. The rotary is driven by an OMR 315 hydraulic motor (no gearbox). It has got 100 mm pipes with 3" Storz coupling at the inlet and 4" Storz coupling at the outlet. It is mounted lengthwise. It comes with a manometer and a thermometer.

**Pos. 2.:**

The rotary comes with one cover and one top plate. The top plate fits for a 250 mm hose to be connected onto the container or tundish. The top plate is equipped with a filter for return air. The top plate can be used for unloading powder, however the return air must be led back into the container when discharging powder. Quick couplings for the installation of the top plate, cover and frame for cleaning are included.

**Pos. 3.:**

Tundish type "fishtail" made in stainless steel. Counterpart with butterfly valve. Hose in dia. 250 mm incl. couplings to establish connection between the tundish and the rotary feeder. The tundish is adjustable in the height.

**Pos. 4.:**

Frame with bars to be used during cleaning operations.

**Pos. 5.:**

Hydraulic system for the operation of tipping system and rotary feeder. To be supplied by a simple pump system at the truck. This means that there is only one hydraulic pressure line and one return line. Flow must be minimum 50 l/min, pressure 170 bar. The system is pneumatically operated. All control valves are placed at the rear left side of the trailer from where the driver operates the entire discharge. It is designed to tip the container up, run the rotary feeder and tip and run the rotary feeder simultaneously. The direction of rotation of the rotary is reversible and the speed is adjustable. The system includes all necessary parts to operate tipping system and rotary feeder, however oil tank and oil pump are not included. The hydraulic system is equipped with safety valves set to the operating pressures of the hydraulic tipping cylinder and to the hydraulic motor. Furthermore two safety features according to CE approval are included.

1. If the top is removed from the rotary feeder it will stop.
2. In case that the motor which runs the compressor makes an unintended stop the rotary feeder must be restarted, it will not start by itself as the motor is restarted. This is done by engaging the normal start procedure.

Manual and plan for maintenance included.





**Capacity:**

Capacity in plastic pellets: 20-28 ton/hour at 50 m distance in 100 mm pipes.

Capacity in plastic powder: 10-15 ton/hour at 50 m distance in 100 mm pipes. Distance means vertical through a pipe with one or two bends.

At longer horizontal distances the capacity can be reduced.

Backpressure caused by small pipes or small silo filters can reduce the capacity.

- Required air volume: 900 - 1000 m<sup>3</sup>/hour.
- Max. working pressure: 1bar.
- Max. temperature of conveying air: 60° C.

**OTHER EQUIPMENT:**

- steel rear chocks
- 2 yellow plastic wheel chocks with holder
- 2 water level indicators
- 2 earthing strips at rear (no earthing reel)
- no ADR equipment
- 1 small stainless steel panel housing the operating controls of rotary feeder / tipping cylinder at left side rear.
- access steps at both sides at rear (Alloy chequered plate) above the bumper and rear lights
- quick coupling connection 1/2" at rear near license plate to connect an air gun (excl. air gun)
- ladder with walkway and collapsible handrail at front
- no stainless steel toolbox
- no full width mudflap possible due to split bumper!

**\* PAINTING & FINISH :**

chassis after assembly shotblasted with steelgrid, protected against rust with zinc-rich primer (> 80 % zinc) and painted with a high quality 2-pack acrylic paint.

Mainframe with twistlock / tipping cylinder and outside of toolbox : painted in one non-metallic RAL colour in green RAL 6018

Stainless steel airline and rotary remain unpainted.

Aircooler blank aluminium remains unpainted.

Axles / axle hubs / landing legs: black pre-painted suppliers Rims:  
Aluminium blank

Instruction decals rotary valve, tipping cylinder, hydro couplings

With reflective block-striping at sides (white) and at rear (red)

**\* APPROVAL:**

Including European COC certificate and French code cnitage



